

**TOSHIBA**

Operating Manual  
**SMMS WAVE TOOL FILE CONVERTER**



# Table of Contents

---

<b>1</b>	<b>Terms of use</b> .....	<b>3</b>
<b>2</b>	<b>Operating environment</b> .....	<b>4</b>
<b>3</b>	<b>Installation</b> .....	<b>4</b>
<b>4</b>	<b>Start and End</b> .....	<b>5</b>
	<b>4-1. Start up the application.</b> .....	<b>5</b>
	<b>4-2. The end of the application</b> .....	<b>6</b>
<b>5</b>	<b>Operation</b> .....	<b>7</b>
	<b>5-1. The screen structure of the application</b> .....	<b>7</b>
	<b>5-2. Menu structure.</b> .....	<b>8</b>
	<b>5-3. NFC file conversion.</b> .....	<b>8</b>

# 1 Terms of use

## About Application

- This SMMS wave tool File Converter is the application software Toshiba Carrier Corporation supplies. It is for the SMMS wave tool user that converts the saved data file of the SMMS wave tool (hereinafter referred to as NFC file) to the CSV format on PC, and make it visible on the PC.

## Notice

- If the software version is not the latest version, the display may not be done properly.
- The display of the application may differ depending on Operation system of your PC.  
To check the current software version, follow these steps:  
[Help (H)] » [Version (A)]  
The latest software can be downloaded from the website below.  
[<http://www.toshiba-carrier.co.jp/global/appli/index.htm>]
- The pictures on this manual are reference images.

## Disclaimer

- This application is provided “as is” without any warranty of any kind, either express or implied, including, but not limited to, the implied warranty of merchantability and the fitness for a particular purpose. Toshiba Carrier Corporation hereby disclaims any warranties relating to quality, performance and non-infringement of the third party rights of this application.
- In no event shall Toshiba Carrier Corporation be responsible for any conflicts between you and any third party (ies) including your customer caused by or in connection with this application.
- In no event shall Toshiba Carrier Corporation be responsible for the loss, divulgation and any other incident of the information and data within this application.
- In no event shall Toshiba Carrier Corporation be responsible for the conflicts or the damage caused by or in connection with the use of third party services such as the e-mail service by you.

## Trademark

- Windows is a registered trademark or trademark of Microsoft Corporation in the United States and/or other countries.

## 2 Operating environment

This application is for the Windows Operating system. The Windows versions that the operation is confirmed are in the table 1.

Table 1. Operation OS

No.	Operation confirmed Windows versions	Bit No
1	Windows7 Professional SP1	32, 64
2	Windows8.1	32, 64
3	Windows10	32, 64

## 3 Installation

- (1) Copy the obtained SMMSWAVETOOLFILECONVERTER.EXE to the arbitrary folder.  
Then the installation is finished.

# 4 Start and End

## 4-1. Start up the application

- (1) Double click the SMMSWAVETOOLFILECONVERTER.EXE to start up the application.
- (2) When you start it up the first time, the Software license agreement screen of the figure 1 is shown. If you agree after reading, then press the [AGREE] button, and the outdoor unit series selection screen of the figure 2 is shown. If you press the [DISAGREE] button, it will be finished without starting the application.
- (3) Press the outdoor unit series button, and the application screen of the figure 3 is shown.

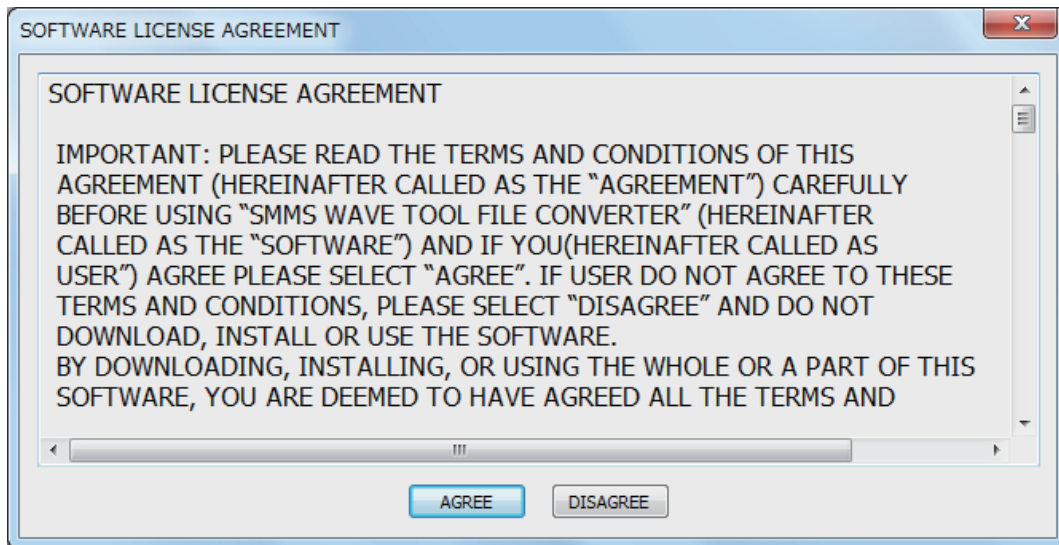


Figure 1. Software license agreement screen

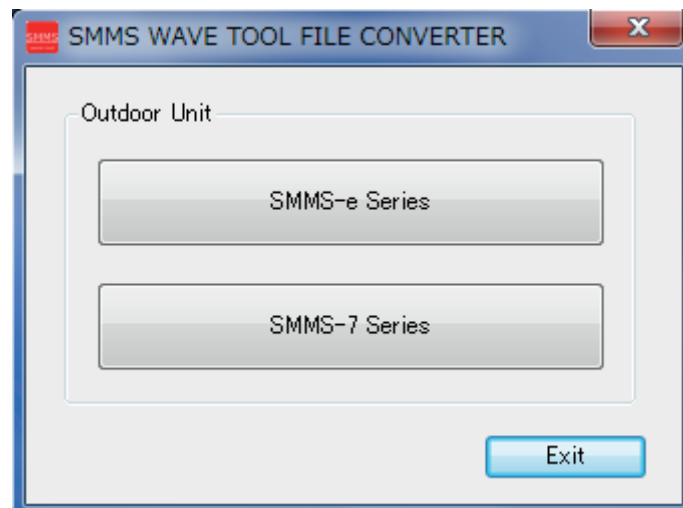


Figure 2. Outdoor Unit series selection screen

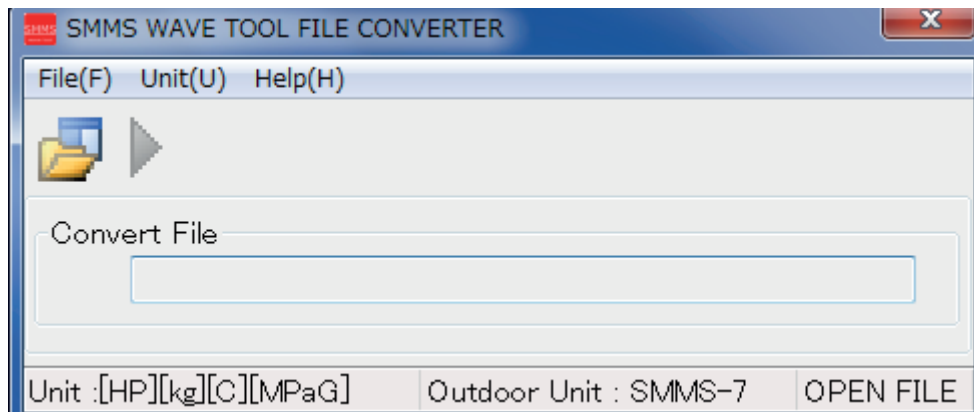


Figure 3. Application screen

## 4-2. The end of the application

- (1) Select the File » Exit in the menu (Figure 4), and then the outdoor unit series selection screen of figure 5 is shown.
- (2) Press Exit button, then the application will be ended. (Figure 5)

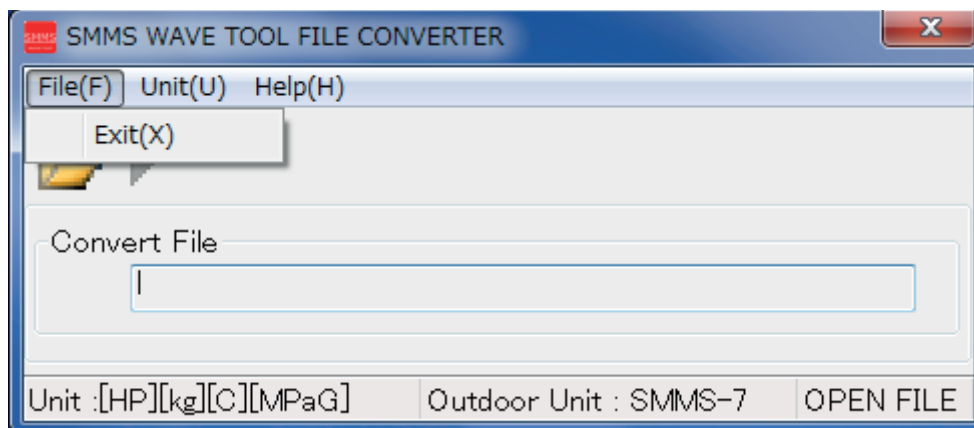


Figure 4. Application screen

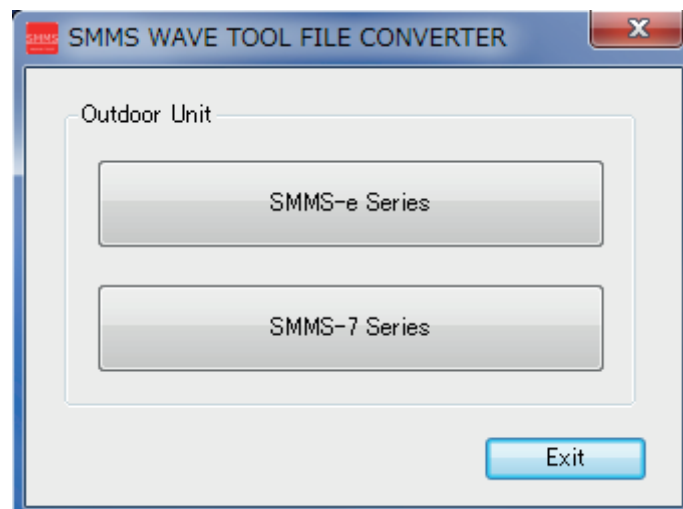


Figure 5. Outdoor Unit series selection screen

# 5 Operation

## 5-1. The screen structure of the application

The screen structure and the functions of the application are shown in the figure 6 and the table 2.

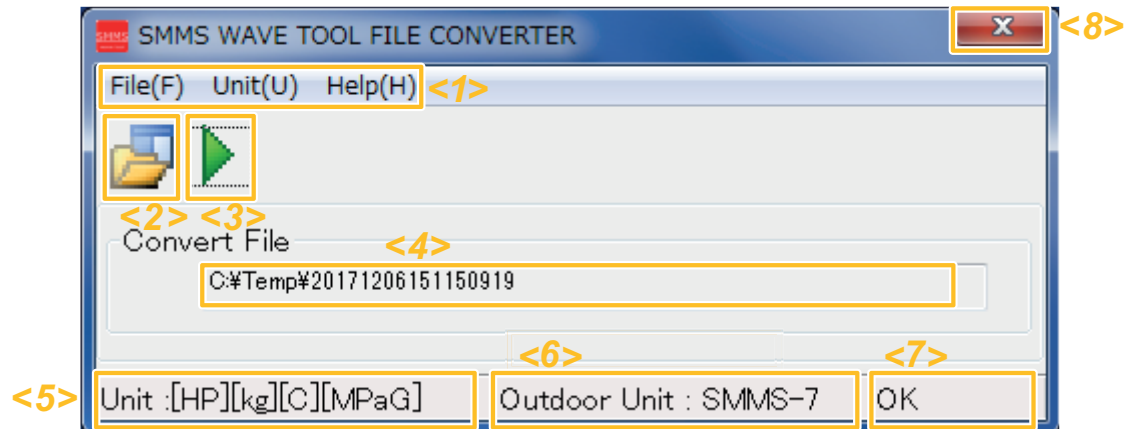


Figure 6. Application screen structure

Table 2. Application screen structure

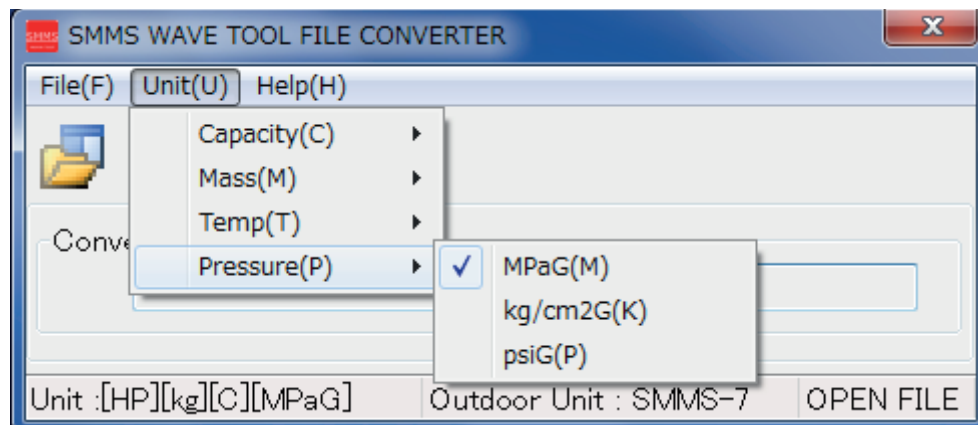
No.	Name	Function
<1>	Menu	Refer to table 3.
<2>	OpenFile button	Opens the screen to select the NFC file to be converted.
<3>	Execute button	Converts the selected NFC file to the CSV file.
<4>	Conversion file name	Shows the NFC file name to convert. Also, the file selection can be made by dragging and dropping the corresponding file here.
<5>	Selection unit	Shows each unit selected on the Unit menu.
<6>	Outdoor unit series	Shows the outdoor unit series name. (SMMS-e, SMMS-7)
<7>	Conversion information	Shows the conversion information. (OPEN FILE, READY, OK, FAIL)
<8>	End button	Ends the application. (Same as the File » Exit in the menu.)

## 5-2. Menu structure

This shows the menu structure and the menu functions.

**Table 3. Menu structure**

Menu name	Menu function
File	Ends the application by the exit selection. (Figure 3)
Unit	To select each unit for the CSV output. (Figure 7 Pressure ex.) Capacity: HP Mass: kg or lbs Temp: Celsius or Fahrenheit Pressure: MPaG or kg/cm2G or psiG The selection result is shown in the lower left of the application screen.
Help	Shows the version information of the application by the version selection.



**Figure 7. Pressure selection screen**

## 5-3. NFC file conversion

- (1) For selecting the NFC file to be converted, press the OpenFile button and select it, or drag and drop it to the ConvertFile area.
- (2) Select each conversion unit in the Unit menu.
- (3) Press the execute button to convert the NFC file to the CSV file.  
The converted CSV file is output in the same folder as the NFC file, with the file name of the NFC file name+.CSV.
- (4) If the conversion succeeds, [OK] will be shown in the lower right of the screen.  
If the conversion fails, the error content will be shown below the screen (table 4), and [FAIL] will be shown in the lower right of the screen.

**Table 4. Error message list and the factor**

No.	Error message	Main error factors
1	CLOSE THE INPUT FILE	The NFC file is used in other applications.
2	INPUT FILE IS INCORRECT	The data format of the NFC file is unusual, the file other than the NFC file is selected, or each data size of the NFC file is too large.
3	CLOSE THE OUTPUT FILE	It cannot be output due to the conversion result file is opened.



